

FROM  
SESSION 3

CREATE PORTRAITS LIKE A PRO  
(& HOW TO FINALLY “GET” HOT-SHOE FLASH)



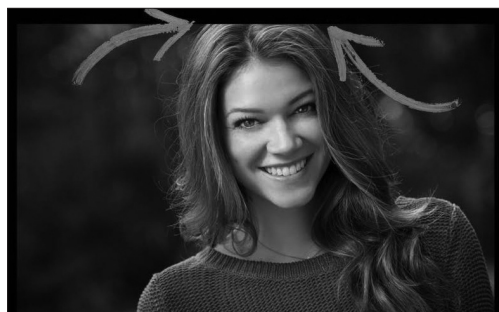
**WHERE TO FOCUS FOR PORTRAITS**

Knowing exactly where to focus is critical for sharp portraits!

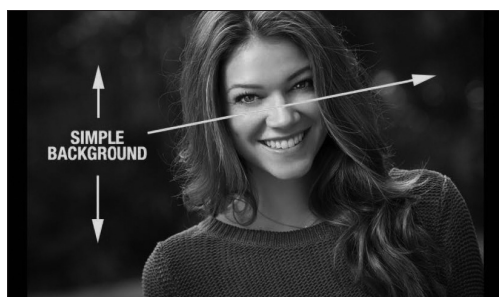
**Lock focus on eye & recompose.** Aim at the eye closest to the camera. Press your shutter button halfway down to lock focus, and keep holding down. Now compose the photo however you'd like then take the shot, knowing your subject's eyes will be perfectly in focus no matter where you aim.



**Eyes 1/3 from the top of frame.** Keep your subject's eyes in the top third of the frame to avoid having the dreaded “too much head room” syndrome.



**It's ok to cut off the top of the head.** Cutting off the top of your subject's head is very popular, especially in commercial portraiture. Pick up any magazine, look at the ads, and you'll see what I mean.



**Keep backgrounds simple.** The simpler the background, the stronger the portrait. Busy backgrounds make people get lost in the scene. Blurring the background with a wide-open f/stop helps big time, too!